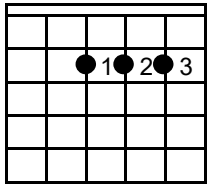
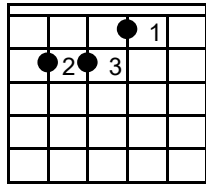


CAMPANA SOBRE CAMPANA

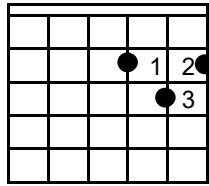
VILLANCICO



La



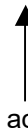
Mi



Re



RITMO



La **Mi**
Campana sobre campana
La
y sobre campana una
Mi
asómate a la ventana
La ↑
veras al niño en la cuna p

La ↑ **Re** ↑ ↑ **La** ↑
Belén campanas de Belén
Re ↑ ↑ **La** ↑ ↑
que los ángeles tocan
Mi ↑ ↑ **La** ↑
que nuevas nos traéis

La **Mi**
Recogido tu rebaño
La
a donde vas pastorcillo
Mi
voy a llevar al portal
La ↑ ○
requesón, manteca y vino p

La ↑ **Re** ↑ ↑ **La** ↑
Belén campanas de Belén
Re ↑ ↑ **La** ↑ ↑
que los ángeles tocan
Mi ↑ ↑ **La** ↑
que nuevas nos traéis

La **Mi**
Campana sobre campana
La
y sobre campana dos
Mi
asómate a la ventana
La ↑
y veras al niño Dios p

La ↑ **Re** ↑ ↑ **La** ↑
Belén campanas de Belén
Re ↑ ↑ **La** ↑ ↑
que los ángeles tocan
Mi ↑ ↑ **La** ↑
que nuevas nos traéis

La **Mi**
Caminando a medianoche
La
hacia dónde vas pastor
Mi
le llevo al niño que nace
La ↑ ○
como Dios mi corazón p

La ↑ **Re** ↑ ↑ **La** ↑
Belén campanas de Belén
Re ↑ ↑ **La** ↑ ↑
que los ángeles tocan
Mi ↑ ↑ **La** ↑
que nuevas nos traéis (bis)

Campana sobre Campana

Villancico

GUITARRA 1

Musical notation for Guitar 1, measures 1-4. The staff is in treble clef with a key signature of three sharps (F#, C#, G#) and a 4/4 time signature. The melody is written on a line labeled '8va'. The guitar tablature below shows fingerings: 2, 2 2 2, 1 2, 0., 1 2, 0 0 2 3, 2 0.

GUITARRA 2

Musical notation for Guitar 2, measures 1-4. The staff is in treble clef with a key signature of three sharps (F#, C#, G#) and a 4/4 time signature. The melody is written on a line labeled '8va'. The guitar tablature below shows fingerings: 0, 0 0 0, 4 0, 2., 4 0, 2 2 4 0, 4 2.

Musical notation for Guitar 1, measures 5-8. The staff is in treble clef with a key signature of three sharps (F#, C#, G#) and a 4/4 time signature. The melody is written on a line labeled '8va'. The guitar tablature below shows fingerings: 2., 0 2, 2 2 2 2, 1 2, 0., 1 2.

Musical notation for Guitar 2, measures 5-8. The staff is in treble clef with a key signature of three sharps (F#, C#, G#) and a 4/4 time signature. The melody is written on a line labeled '8va'. The guitar tablature below shows fingerings: 4., 2 0, 0 0 0 0, 4 0, 2., 4 0.

8va

7

T
A
B

0 0 2 3 2 0 | 2. 0 2. 2 | 0. 0 2 0 3 2

8va

T
A
B

2 2 4 0 4 2 | 4. 2 0. 4 | 2. 2 4 2 0 4

8va

10

T
A
B

0. 0 2 0 2 4 | 5 0 2 0 3 2 0 | 2 2. 3

8va

T
A
B

2. 2 4 2 4 1 | 2 2 4 2 0 4 2 | 0 4. 0

8va

13

T
A
B

2 0 2 0 2 0 0 4 0 0 3

8va

T
A
B

4 2 0 2 4 2 0 4 2 2 1 2 2 0

8va

16

T
A
B

2 0 2 2 3 2 0 2 0 2 0 3 2 0 0

8va

T
A
B

4 2 0 4 0 4 2 0 2 4 2 0 4 2 2

8va

19

T
A
B

8va

T
A
B

8va

22

T
A
B

8va

T
A
B