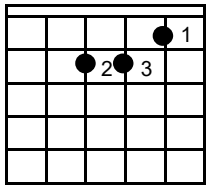
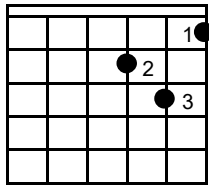


FUENTECITA QUE CORRE

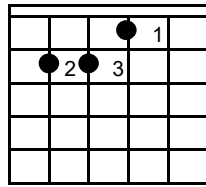
VILLANCICO



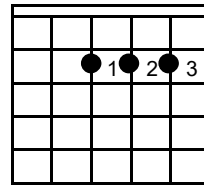
La m



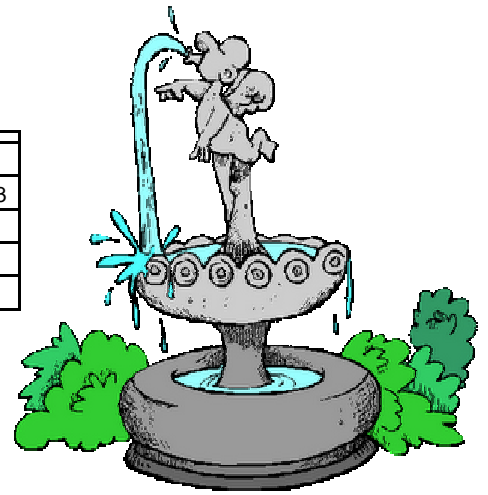
Re m



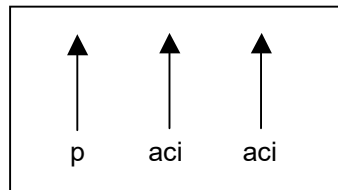
Mi



La



RITMO



ARPEGIOS Y RITMO (BIS)

La m

A la nanita nana, nanita ella, nanita ella,

Re m La m Mi La m

Mi Jesús tiene sueño bendito sea, bendito sea

La m

A la nanita nana, nanita ella, nanita ella,

Re m La m Mi La

Mi Jesús tiene sueño bendito sea, bendito sea

Mi

Fuentecita que corre

La

Clara y sonora

Mi

Ruisenor que en la selva

La

Cantando llora

Rem La m

Calla mientras la cuna

Mi La m

Se balancea

Re m La m Mi La m

A la nanita nana, nanita ella **(BIS)**

FUENTECITA QUE CORRE

VILLANCICO

Transcripción Pablo Espigares

8va

Picado

T
A
B

2 2 0 1 3 0 0 0 1 3 0 0 0 1 3

8va

T
A
B

5 0 3 0 1 3 1 0 1 3 0 1

④

8va

T
A
B

3 0 1 3 0 1 2 2 0 5 4 2

① ④

8va

T
A
B

4 0 2 0 3 2 0

8va

13

T 2 0 5 4 2 4 0 2 0 3

A

B

8va

16

T 2 0 1 1 1 3 1 0 1

A

B

8va

19

T 3 1 0 1 3 0 1 1 1 3 1

A

B

1.

8va

22

T 0 1 3 1 0 1 0 2

A

B

1ª Vez

Po

2.
8va
2ª Vez
25
10 8 7 8 7
Po
5 5 5 2 2 5
B
P

8va
ARPEGGIOS
28
T 2 1 0 1 2 2 1 0 1 2
A 0. 0. 0.
B 0. 0. 0.

8va
31
T 3 1 3 2 3 1 0 1 2
A 0. 0. 0.
B 0. 0. 0.

8va
34
T 2 1 0 1 2 1 0 0 0 1 1 0 0 0 1
A 0. 0. 0.
B 0. 0. 0.

The image shows a musical score for guitar. At the top, there is a treble clef staff with a melody consisting of eighth notes. Below the staff is a guitar tablature. The tablature is labeled 'T', 'A', and 'B' for the treble, middle, and bass strings respectively. The melody starts on the 8th fret, indicated by '8va' and a capo symbol. The tablature shows the following fret numbers: T (2, 2, 0, 2, 2), A (2, 2, 0, 2, 2), and B (0, 0). The score is divided into two measures by a vertical bar line.